

Hisense

Quick Start Guide

5.1.2 CH Soundbar with Wireless Subwoofer

Model: AX5125H



What's in the Box



Main Unit



Wireless Subwoofer



Rear Surround Speakers



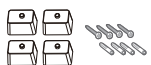
Remote Control /
AAA Batteries x 2



User Manual /
Quick Start Guide



* Plug type varies by region



Brackets (x4) / Bracket Screw (x4)
/ Wall Anchors (x4)

1



HDMI Cable

2



Optical Cable

3



AC Power Cord x 2
For Main Unit / Wireless Subwoofer

4



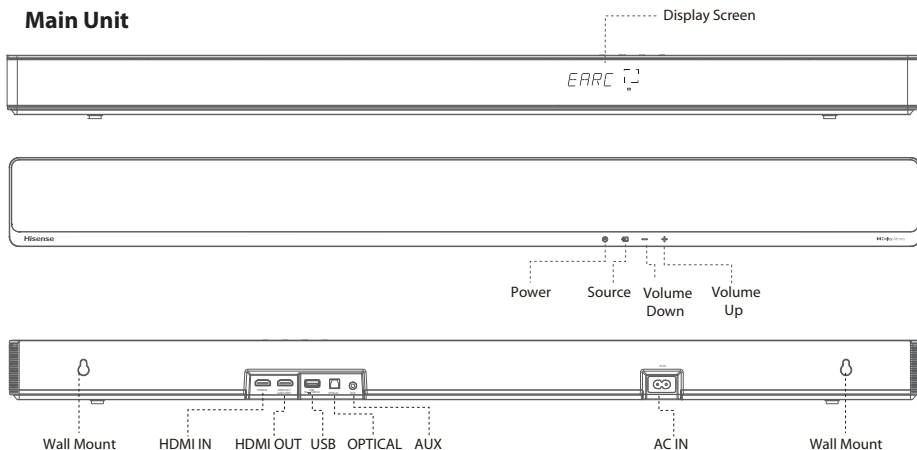
AC Power Cord x 2
For Rear Surround Speakers

* Power cord quantity and plug type vary by regions.

1

Identifying the Parts

Main Unit



① Indicator

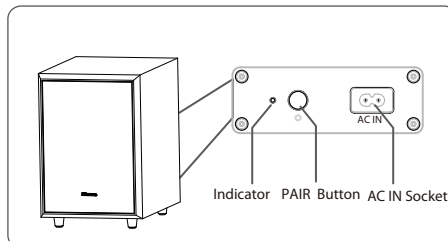
• Fast blink	The subwoofer in pairing mode
• Constant on	Connected / Paired successfully
• Slow blink	Connection / Pairing failed

② PAIR Button

2 seconds	Clear the pairing record and enter to pairing mode
-----------	--

③ AC IN Socket

Connect to power supply.



Wireless Rear Surround Speakers

① PAIR Button

2 seconds

Clear the pairing record and enter to pairing mode

② Indicator

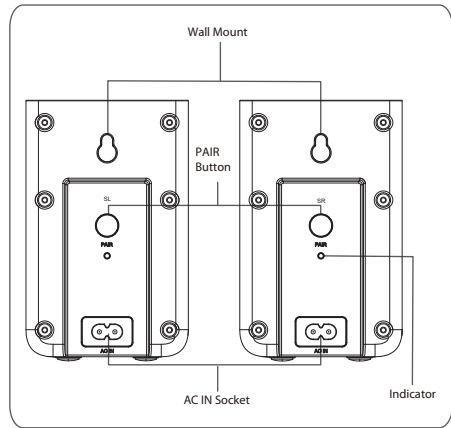
• Fast blink	Rear speakers in pairing mode
• Constant on	Connected / Paired successfully
• Slow blink	Connection / Pairing failed

③ AC IN Socket

Connect to power supply.

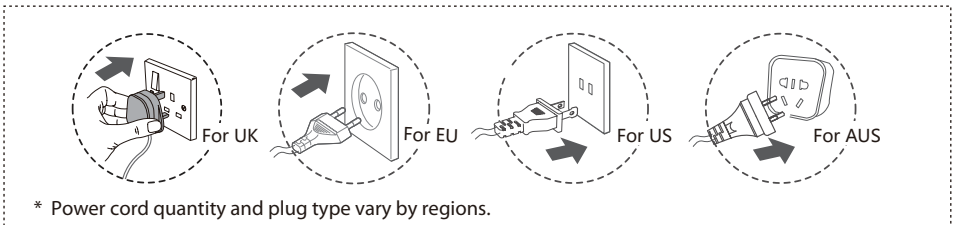
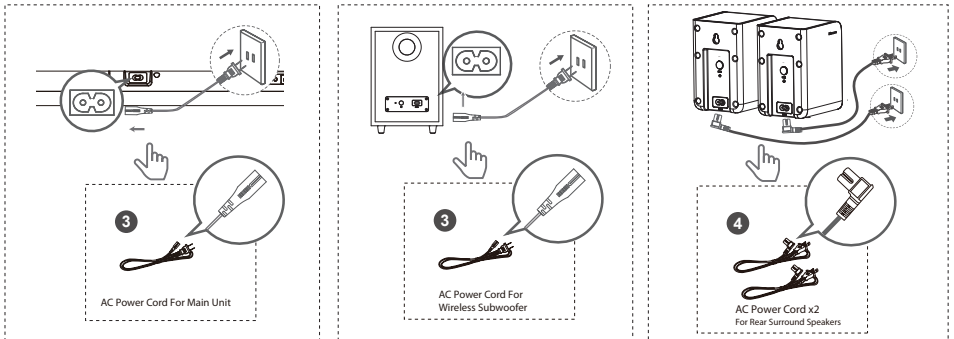
④ Wall Mount

Install the wall screws and brackets into the back of the rear surround speakers.



2 Power to Soundbar, Subwoofer and Rear Surround Speakers.

The subwoofer, rear surround speakers and soundbar will automatically pair when they are plugged into the mains sockets and turned on. No cable is needed for connecting the three units.



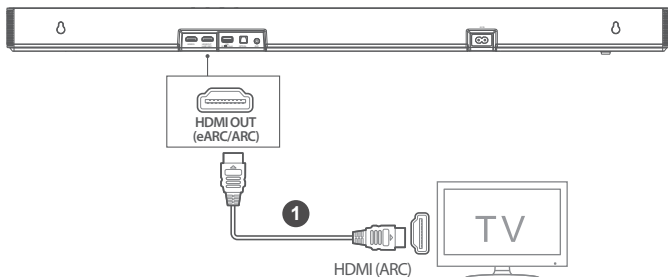
* Power cord quantity and plug type vary by regions.


* If no audio from the wireless subwoofer can be heard, manually pair up them. refer to use manual page 14 "Manual Pairing" description.

3

Select the play function ()

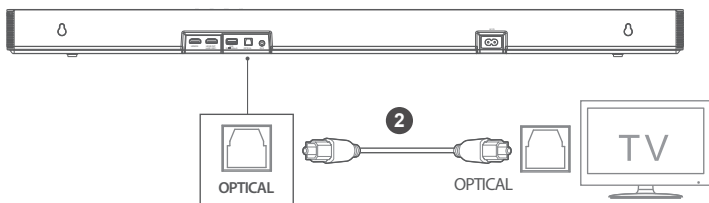
TV(HDMI ARC)




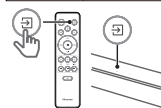
eARC 	
Display	Mode
eARC	HDMI eARC
ARC	HDMI ARC



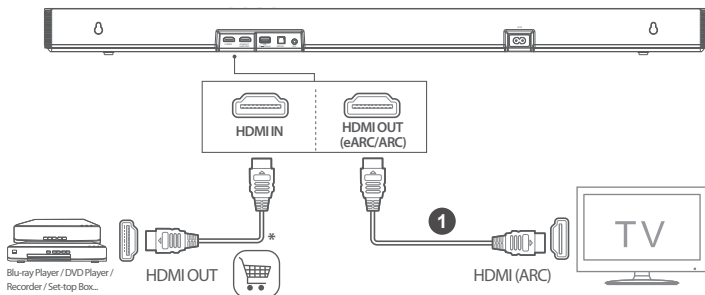
TV(OPTICAL)




DPT 	
Display	Mode
DPT	OPTICAL



TV(HDMI ARC)

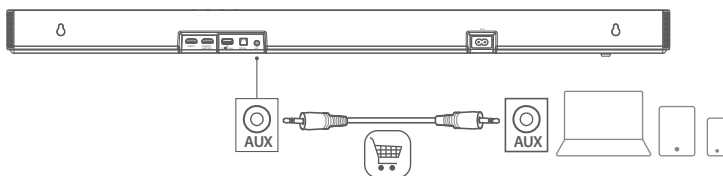



Blu-ray Player / DVD Player / Recorder / Set-top Box...

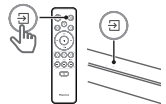
HDMI 	
Display	Mode
HDMI	HDMI IN



PAD, Mobilephone, PC etc.(AUX)

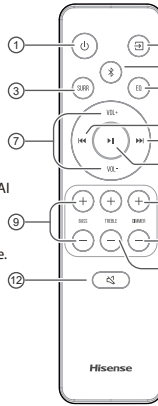


AUX 	
Display	Mode
AUX	AUX



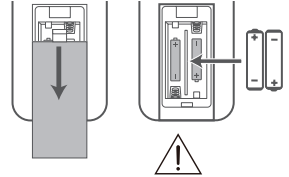
4 Remote Control

- ① Switch the unit between ON and STANDBY mode.
- ② Select the play mode.
- ③ **SURR** Adjust the surround ON/OFF.
- ④ Select the Bluetooth mode. Press and hold the (Bluetooth) button to activate the pairing function in Bluetooth mode or disconnect the existing paired Bluetooth device.
- ⑤ **EQ** Select MUSIC/MOVIE/NEWS/SPORT/NIGHT/GAME/AI Skip to previous/next track in Bluetooth / USB mode.
- ⑥ Play/pause/resume playback in Bluetooth / USB mode. Press and hold the button for 3s to enter setup menu. Confirm a selection.
- ⑦ **VOL+/-VOL-** Increase/decrease the volume level.
- ⑧ Play/pause/resume playback in Bluetooth / USB mode. Press and hold the button for 3s to enter setup menu. Confirm a selection.
- ⑨ **BASS+/-** Adjust bass level.
- ⑩ **TREBLE+/-** Adjust treble level.
- ⑪ **DIMMER+/-** Adjust display brightness.
- ⑫ Mute or resume the sound.



Replace the Remote Control Battery

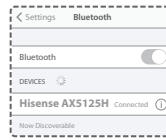
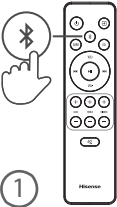
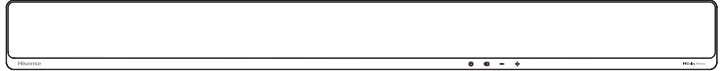
- 1 Press and slide the back cover to open the battery compartment of the remote control.
- 2 Insert two **AAA** size batteries. Make sure the (+) and (-) ends of the batteries match the (+) and (-) ends indicated in the battery compartment.
- 3 Close the battery compartment cover.



- Do not mix old and new batteries;
- Do not mix alkaline, standard (Carbon-Zinc) or rechargeable (Ni-Cd, Ni-MH, etc.) batteries.

5 Bluetooth() Operation

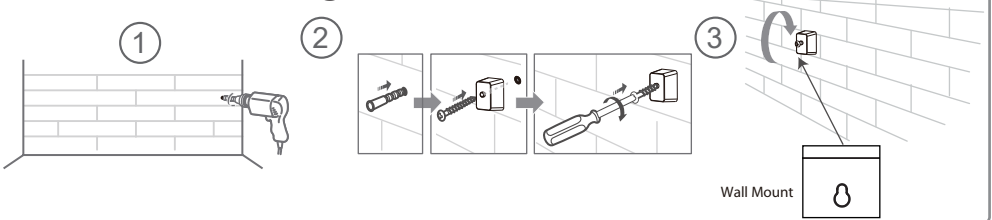
Display	Mode
NO BT	Bluetooth Not Connected



Display	Mode
BT IN	Bluetooth Connected



6 Wall Mounting



- ✓ Simple setup
- ✓ One remote
- ✓ Quick settings

500W
Max Audio Power

Dolby Atmos

dts X

HDMITM
HIGH-DEFINITION MULTIMEDIA INTERFACE

Bluetooth[®]

CE UK CA



00964

Roku, the Roku logo, Roku TV, Roku TV Ready, and the Roku TV Ready logo are trademarks and/or registered trademarks of Roku, Inc. This product is Roku TV Ready-supported in the United States, United Kingdom, Mexico and Canada. Countries are subject to change. For the most current list of countries in which this product is Roku TV Ready-supported, please email rokutvready@roku.com.

Made in China

F&D 奋达科技		料号	12.005.0004.06944		尺寸(mm)	成型尺寸: 145x210		环保要求	说明书类说明: 1、公差 (mm): 0<a≤50 (+0.3/-0.2), 50<a≤150 (+1/-0.5), >150 (+1.5/-1, 有特殊要求的, 按标示公差执行。 2、要求图文清晰可辨, 内容完整, 折叠正确, 无重影, 墨屎、杂点、脏点、异物、粉点、套印不准。 3、尺寸按展开尺寸及成型外尺寸测量计算。
项目名称	23年海信A*SS25H(声霸音霸)项目	产品型号	AX5125H		材质	80克环保书纸		■RoHS2.0、Reach	
日期	2023/06/02	部件名称	用户指南		页码P数	6/p		□包装指令94/62/EC	
包装工程师	李小明	平面工程师	LIHONG		颜色	单色印刷		□大豆油墨印刷	
设计版本	变更提出人	变更原因		是否有可参考	表面处理	■无 □光油 □哑油 □水性光油 □水性哑油 □UV油 □光胶 □哑膜 □防刮花哑膜		□无氯漂白工艺	
A0	客户			□刀模 ■颜色	工艺	■无 □烫金 □烫银 □击凸 □击凹 □压网 □局部UV □其它		□粘合剂为非石油基	
				□无	条码要求	□无条码 ■有条码 (清晰易扫描)		□油墨中禁止使用矿物油 (法国)	
				■有: 12.005.0004.05984	装订方式	■风琴折 □包心折 □骑马钉 □胶装 □线装 ■对折		□TPCH (美国)	

版本: A/4

折页方式: 左右风琴折(开口朝左)。



06944

Made in China

封面

