

# Hisense

life reimagined

## USER'S OPERATION MANUAL

Before operating this unit, please read this manual thoroughly, and retain for future reference

CFU21N6AWE

English

For questions about features, operation/performance, parts or service, call:  
1-855-344-7367

## Table of Contents

Brief introduction.....	2	Using your appliance.....	14
Important safety instructions.....	3	Cleaning and care.....	14
Installing your new appliance.....	5	Helpful hints and tips.....	15
Reversing the door.....	8	Troubleshooting.....	17
Description of the appliance.....	11	Disposal of the appliance.....	18
Display controls.....	12		

## Brief Introduction

Thank you for choosing Hisense. We are sure you will find your new refrigerator a pleasure to use. Before you use the appliance, we recommend that you read through these instructions carefully, which provides details about its usage and functions.

- Please ensure that everyone using this appliance is familiar with its operations and safety features. It is important that you install the appliance correctly and pay careful attention to the safety instructions.

- We recommend that you keep this user's manual with the appliance for future reference.

- This appliance is intended to be used in households and similar applications such as:

- Staff kitchen-areas in shops, offices and other working environments;
- Clients in hotels, motels and other residential types of environment;
- Bed and breakfast type of environments;
- Catering and similar non-retail applications.

- This appliance is not intended for use by persons (including children) with reduced physical, sensory or mental capabilities, or lack of experience and knowledge, unless they have supervision or been given instruction concerning use of the appliance. Children should be supervised

to ensure that they do not play with the appliance.

- Do not store explosive substances such as aerosol cans with a flammable propellant in this appliance.

**WARNING** — Connect to potable water supply only.

**WARNING** — Do not use mechanical devices or other means to accelerate the defrosting process, other than those recommended by the manufacturer.

**WARNING** — Do not damage the refrigerant circuit.

**WARNING** — Do not use electrical appliances inside the food storage compartments of the appliance, unless they are of the type recommended by the manufacturer.

**WARNING** — When disposing of the appliance do so only at an authorized waste disposal centre. Do not expose to flame.

**WARNING** — The instructions include the following wording regarding the use of extension cords or ungrounded (two prong) adapters: Do not use an extension cord or ungrounded (two prong) adapters.

**WARNING** — If the supply cord is damaged, it must be replaced by the manufacturer, its service agent or similarly qualified persons in order to avoid a hazard.

## Important Safety Instructions

### General safety and daily use



It is important to use your appliance safely. We recommend that you follow the guidelines below.

Store any food in accordance with the storage instructions from the manufacturer.

- Don't try to repair the appliance yourself. It is dangerous to alter the specifications or modify this product in any way. Any damage to the power cord may cause a short circuit, fire or electric shock.
- Don't place too much food directly against the air outlet on the rear wall of the freezer compartment, as it affects sufficient air circulation.
- Don't place hot items near the plastic components of this appliance.
- Frozen food must not be refrozen once it has been thawed out.
- Don't store bottled or canned drinks (especially carbonated drinks) in the freezer compartment. Bottles and cans may explode.
- Use caution consuming popsicles or ice cubes straight from the freezer as this can cause freezer burn to the mouth and lips.

### Safety for children and infirm persons

- Keep all packaging away from children to avoid risk of suffocation.
- Protect children from being scalded by touching the compressor at the rear bottom of appliance
- Don't place items on top of the appliance as this could cause injury should they fall off.
- Never allow children to play with the appliance by hanging or standing over or on the doors, racks, shelves and drawers *etc.*

### Electrical Safety



To avoid the risks that are always present when using an electric appliance, we recommend that you pay attention to the instructions about electricity below.

- Unpack and check through the appliance. Should any damage be evident, don't plug in the appliance but contact the shop immediately from which you purchased it. Keep all packing materials in this case.
  - We recommend that you wait for 4 hours before connecting the appliance to allow the refrigerant to flow back into the compressor.
  - The appliance must be applied with single phase alternating current of **115V/60Hz**. If the voltage fluctuates exceeding the upper limit, A.C. automatic voltage regulator of more than 350W should be applied to the refrigerator for safety use.
  - The power plug must be accessible when the appliance is installed.
  - This appliance must be grounded.
  - This appliance is fitted with a plug, in accordance with local standard. The plug should be suitable for use in all houses fitted with sockets in accordance with current specifications.
  - If the fitted plug is not suitable for your socket outlets, it should be cut off and carefully disposed of. To avoid a possible shock hazard, do not insert the discarded plug into a socket. If in doubt contact a qualified, registered electrician.
  - Do not use extension cords, ungrounded (two prong) adapters or multiple sockets which could cause overloading of wiring circuits and could cause a fire.
- Always plug your appliance into its own individual electrical socket which has a

voltage rating that matched the rating plate.

- Make sure that the plug is not squashed or damaged. Otherwise, it may cause short circuit, electric shock or overheat and even cause a fire.

- Do not insert the power plug if the socket is loose, there is a risk of electric shock or fire.

- Switch off the appliance and disconnect it from the main power before you clean or move it.

- Never unplug the appliance by pulling on the electrical cord. Always grip the plug firmly and pull straight out from the socket to prevent damaging the power cord.

- Do not operate the appliance without the cover of interior lighting.

- Any electrical component must be replaced or repaired by a qualified electrician or authorized service engineer. Only genuine replacement parts should be used.

- Do not use electrical appliances such as ice cream makers inside the food storage compartments of the appliance unless they are approved by the manufacturer.

- To avoid eye injury, do not look direct into the LED light located in the freezer compartment. If it is not functioning correctly, consult a qualified, registered electrician or replace it in accordance with the “cleaning and care” chapter.

### Refrigerant

The refrigerant isobutene (R600a) is contained within the refrigerant circuit of the appliance. During transportation and installation of the appliance, ensure that none of the components of the refrigerant circuit becomes damaged.

The refrigerant (R600a) is flammable.



**Caution: Risk of Fire**

- Don't store products which contain flammable propellants (e.g. spray cans) or explosive substances in the appliances.

### Should the refrigerant circuit be damaged:

- Avoid open flames (candles, lamps etc.) and sources of ignition.

- Thoroughly ventilate the room in which the appliance is situated.

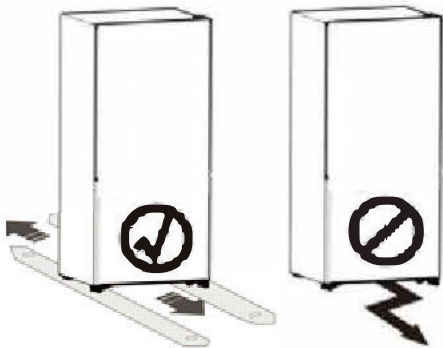
## Installing Your New Appliance

Before using the appliance for the first time, you should be informed of the following tips.

### Warning!

For proper installation, this freezer must be placed on a level surface of hard material that is the same height as the rest of the flooring. This surface should be strong enough to support a fully loaded freezer.

The rollers, which are not castors, should be only used for forward or backward movement. Moving the freezer sideways may damage your floor and the rollers.

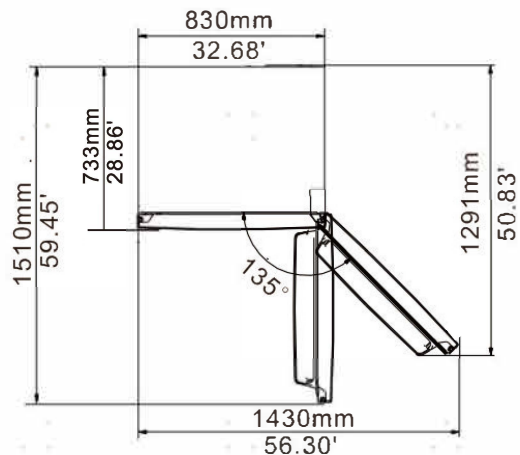
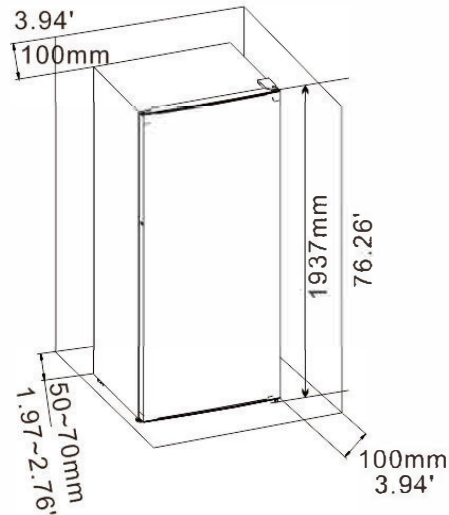


### Ventilation of appliance



In order to improve efficiency of the cooling system and save energy, it is necessary to maintain good ventilation around the appliance for the dissipation of heat. For this reason, sufficient clear space should be available around the refrigerator.

**Suggestion:** It is advisable for there to be at least 50-70mm (1.97~2.76') of clearance from the back of the fridge to the wall, at least 100mm (3.94') of clearance from its top, at least 100mm (3.94') from its side to the wall and a clear space in front to allow the doors to open 135°. As shown in following diagrams.



### Note:


- This appliance performs well with ambient temperature between 12.8°C (55°F) to 43.3°C (109.9°F). The appliance may not work properly if left at a temperature above or below the indicated range.
- Stand your appliance in a dry place to avoid high moisture.
- Keep the appliance out of direct sunlight, rain or frost. Stand the appliance away from heat sources such as stoves, fires or heaters.

### Leveling of appliance



- For sufficient leveling and air circulating in the lower rear section of the appliance, the bottom feet may need to be adjusted. You can adjust them manually by hand or

by using a suitable tool.

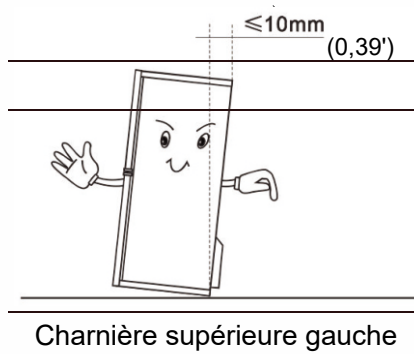
### Tools you will need:

Not provided	 × 1
	Philips Screwdriver & Slotted Screwdriver

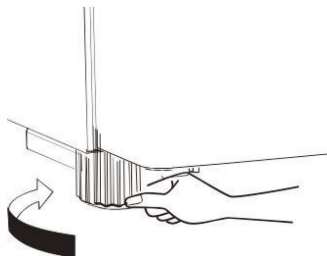
### The plastic bag provided:

 × 1
Screw
 × 1
supporting pad

- To allow the door to self-close, tilt the top backwards by about 10mm (0.39')



- You can adjust them manually by hand or using a suitable spanner.



### Note:

- If required you may lay the freezer on its back in order to gain access to the base, you should rest it on soft foam packaging or similar material to avoid damaging the backboard of the refrigerator.

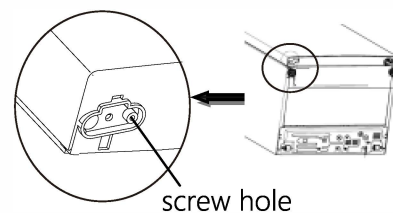
- There is no need to install these

accessories under normal usage.

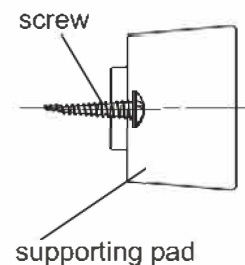
Only under the extreme circumstances, that is opening the door about 90 degree, this freezer may take risk of tipping.

Then supporting pad should be fastened to the lower base cover to steady this appliance.

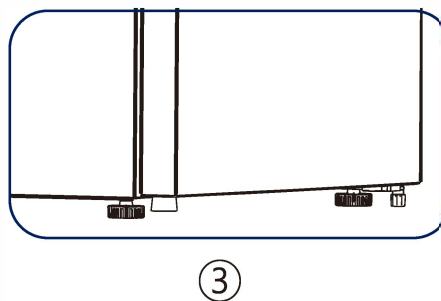
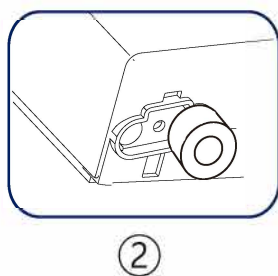
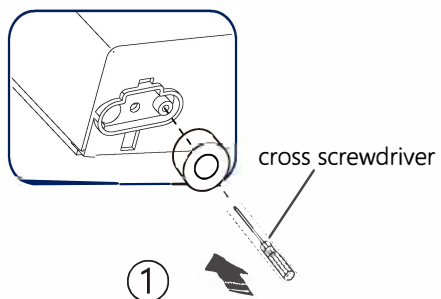
1. Tilt appliance to find screw hole on the left of lower base cover.



2. Put a screw into the hole of supporting pad (The plastic bag provided).



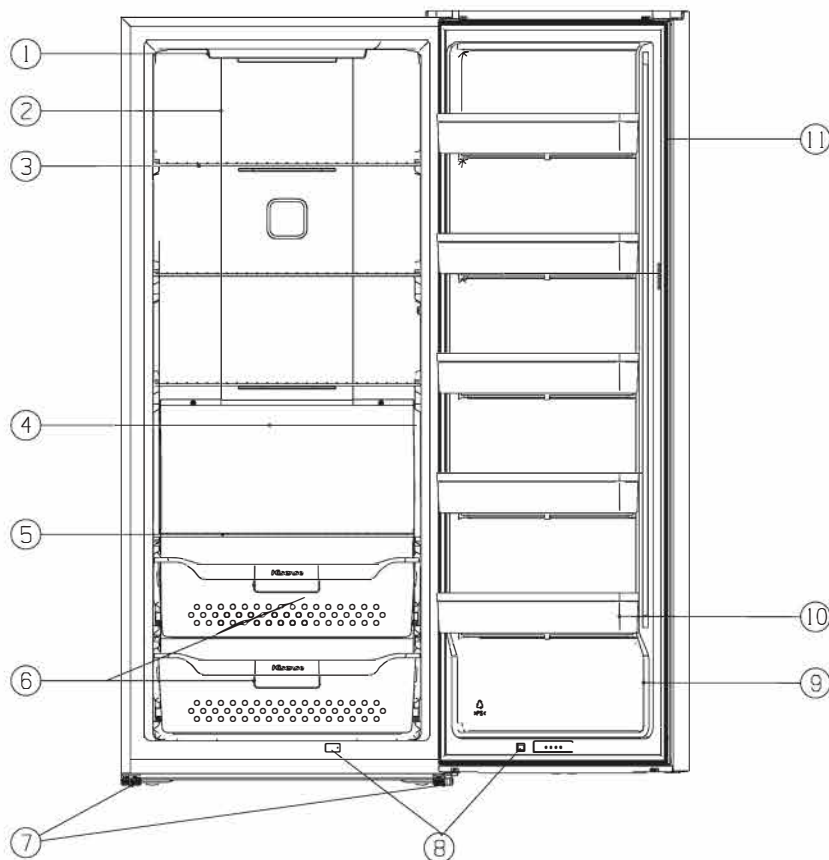
3. Make screw in alignment with the hole on lower base cover. Fasten supporting pad to the base cover firmly by a cross screwdriver (self-provided).



## Description of the Appliance

### View of the appliance

1. Display panel
2. Upper air duct
3. Lower Wire Shelf
4. Lower air duct
5. Lower Wire Shelf
6. Storage Basket
7. Adjustable bottom feet
8. Door switch
9. Door
10. Door bin
11. Door gasket



### Note !

- Due to unceasing modification of our products, your freezer may be slightly different from this instruction manual, but its functions and using methods remain the same.
- To get the best energy efficiency of this product, please place all shelves, drawers and baskets on their original position as the illustration above.



## Display controls




### Controlling the temperature

Use your appliance according to the following control regulations, your appliance has the corresponding functions as the control panels showed in the pictures above.

#### Caution!

When you set a temperature, you set an average temperature for the whole refrigerator cabinet. Temperatures inside each compartment may vary from the temperatures displayed on the panel, depending on how much food you store and where you place it. High or low room temperature may also affect the actual temperature inside the appliance.

#### 1. POWER

Press and hold the  button at least 3 seconds to enter/exit standby mode. After entering the standby mode, the temperature area will display "OF", other icons will be extinguished, and other key functions will be invalid, until the original control state is restored after pressing the button again to exit the standby mode.

#### 2. Freezer/Fridge conversion

Press and hold Freezer/Fridge conversion button for 3 seconds to convert between freezer compartment and fridge compartment.

After that, the light will go out first, and then turn on or flash once, which is a normal phenomenon that the

control system has realized switching.

#### Caution!

- Before changing the compartment setting, make sure that the stored food is suitable for new setting mode. If not, please empty it first.
- When the freezer mode is changed to fridge mode, please open the door for 5 minutes before putting in the food that needs to be refrigerated.
- When the fridge mode is changed to freezer mode, please close the door and run for 200 minutes before putting in the food that needs to be frozen.
- When the fridge mode is changed to freezer mode, ensure there are no bottled or canned drinks (especially carbonated drinks) in the freezer compartment. Bottles and cans may explode.

#### 3. TEMP.

Press the TEMP. button to adjust the temperature to the desired setting.

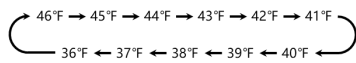
If you have set the Freezer compartment type to Fahrenheit, the temperature will be set in the following sequence.

7°F → 6°F → 5°F → 4°F → 3°F → 2°F → 1°F → 0°F → -1°F → -2°F  
 -11°F ← -10°F ← -9°F ← -8°F ← -7°F ← -6°F ← -5°F ← -4°F ← -3°F

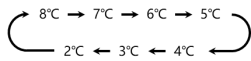
If you have set the Freezer compartment type to Celsius, the temperature will be set in the following sequence.

-14°C → -15°C → -16°C → -17°C → -18°C → -19°C  
 -24°C ← -23°C ← -22°C ← -21°C ← -20°C

If you have set the Fridge compartment type to Fahrenheit, the temperature will be set in the following sequence.



If you have set the Fridge compartment type to Celsius, the temperature will be set in the following sequence.



#### 4. **TEMP.** °F / °C Hold 3Sec

Press and hold the “TEMP.” button for 3 seconds to toggle between Celsius and Fahrenheit on the display.

#### 5. Door Alarm

When the door has been opened for over 2 minutes, the door alarm will come on. In case of door alarm, the door alarm indicator will light up and blink, and “dr” is displayed in the temperature display area, meanwhile, the buzzer will sound 3 times every 1 minute and will stop alarming automatically after 8 minutes. The door alarm can be cleared by closing the door.

- In case of door alarm, it can be turned off by closing the door.
- In case of door alarm, you can press and hold the “MODE” button for at least 3 seconds to clear the door alarm sound, and then the control panel will show “dr” and the “Alarm” icon will light.
- To save energy, please avoid keeping the door open for a long time when using the appliance.

#### 6. Energy Saving

This function makes the refrigerator work in a power saving mode which is useful for reducing energy consumption when you are away.

Press the “MODE” button to turn on the Energy saving function. The “Energy Saving” icon will be illuminated.

- When the Energy Saving function is on, in the fridge state, the temperature is set to 6°C (43°F); in the freezer state, the temperature is set to -17°C (1°F).
- When Energy Saving function is on, you can turn it off by pressing the “MODE” or “TEMP.” button and the refrigerator temperature setting will revert back to the previous setting.

#### 7. Super Freeze

The Super Freeze feature helps to keep the food stored in the freezer at the set temperature during periods of high usage, large grocery loads, or temporarily warm room temperatures. In the freezer state, press the “MODE” button to turn on the Super Freeze function. The “Super Freeze/Super Cool” icon will be illuminated.

- When the Super Freeze function is on, in the freezer state, the temperature is set to -24°C (-11°F).
- When Super Freeze function is on, you can turn it off by pressing the “MODE” or “TEMP.” button and the refrigerator temperature setting will revert back to the previous setting.
- Super Freeze will automatically turn off after 52 hours.

**NOTE:** Do not leave glass bottles or canned drinks (especially carbonated drinks) in the freezer compartment. Bottles and cans may explode.

#### 8. Super Cool

The Super Cool feature helps to keep food stored in the refrigerator at the set temperature during periods of high usage, large grocery loads, or temporarily warm room temperatures. In the fridge state, press the “MODE” button to turn on the Super Cool function. The “Super Freeze/Super Cool” icon will be illuminated.

- When the Super Cool function is on, in the fridge state, the temperature is set to 2°C (36°F).
- When Super Cool function is on, you can turn it off by pressing the "MODE" or "TEMP." button and the refrigerator temperature setting will revert back to the previous setting.
- Super Cool will automatically turn off after 6 hours.

#### 9. Demo mode

Demo mode is for store display and it

prevents the refrigerator from generating cool air. In this of Cooling off Mode, the refrigerator may seem like it is working but it will not make cool air. The display panel will show special segments as follow.



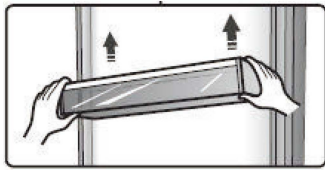
Press and hold the "POWER" and "MODE" buttons at the same time for 3 seconds to turn off the demo mode and the buzzer gave a long sound.

## Using your Appliance

This section tells you how to use most of the useful features. We recommend that you read through them carefully before using the appliance.

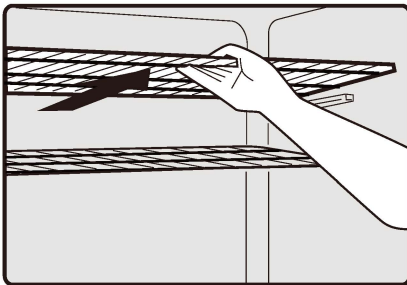
### Door Bin

- Do not place too many heavy things in the door bin.
- All the door bins are completely removable for cleaning.



### Wire Shelf

- Shelves can be taken out to be cleaned.



- To avoid hurting your hands, don't hold the shelf with a wet hand.

### Using the freezer compartment

- For freezing fresh food and storing frozen and deep-frozen food for long periods of time.
- The freezer compartment is provided with drawers.
- Do not store food too close to the air outlet on the air duct.
- To help prevent child entrapment, keep the key out of reach of children and away from cabinet.

### Caution!

- When the freezer reaches the set temperature, it will take a enough effort to open the door, and open door again after closing, please wait for 15 seconds later.
- When you close the freezer door, you will hear a slight inhalation sound, accompanied by the flattening of the freezer door gasket, because this large refrigerator has enough powerful cooling power.

## Cleaning and Care

For hygienic reasons the appliance (including exterior and interior accessories) should be cleaned at least every two months.

### Warning!

To avoid electrical shock, the appliance must not be connected to the main power supply during cleaning. Before cleaning, switch the appliance off and remove the plug from the main socket.

### Exterior cleaning

To maintain good appearance of your

appliance, you should clean it regularly.

- Spray water onto a cleaning cloth instead of spraying directly on the surface of the appliance. This helps ensure an even distribution of moisture to the surface.
- Clean the doors, handles and cabinet surfaces with a mild detergent and then wipe dry with a soft cloth.

### Caution!

- Don't use sharp objects to clean with, as they are likely to scratch the surface.
- Don't use Thinner, Car detergent, bleach,

ethereal oil, abrasive cleansers or organic solvent such as Benzene for cleaning. They may damage the surface of the appliance and may cause fire.

### **Interior cleaning**

You should clean the appliance interior regularly. It will be easier to clean when food stocks are low. Wipe the inside of the fridge freezer with a weak solution of backing soda and water, and then rinse with warm water using a wrung-out sponge or cloth. Wipe completely dry before replacing the shelves and baskets. Thoroughly dry all surfaces and removable parts before putting them back into place. Although this appliance automatically defrosts, a layer of frost may occur on the freezer compartment's interior walls if the freezer door is opened frequently or kept open too long. If the frost is too thick, choose a time when the freezer is nearly empty and proceed as follows:

1. Remove existing food and accessories baskets, unplug the appliance from the main power and leave the doors open. Ventilate the room thoroughly to accelerate the process.
2. When defrosting is completed, clean your freezer as described above.

### **Warning!**

Do not use sharp objects to remove frost from the freezer compartment. Only after the interior is completely dry should the appliance be switched back on and plugged back into the main socket.

### **Door seals cleaning**

Take care to keep door seals clean. Sticky food and drinks can cause seals to stick to the cabinet and tear when you open the door. Wash seal with a mild detergent and warm water. Rinse and dry it thoroughly after cleaning.

**Caution!** Only after the door seals are completely dry should the appliance be powered on

### **Replacing the LED light**

Warning: The LED light must be replaced by a competent person. If the LED light is damaged, follow the steps below:

1. Unplug your appliance.
2. Remove light cover by rising up and pulling out the LED light.
3. Hold the LED light with one hand and pull it with the other hand while pressing the connector latch.
4. Replace LED light and snap it correctly in place and recover the light cover.

## **Helpful Hints and Tips**

### **Energy Saving Tips**

We recommend that you follow the tips below to save energy.

- Try to avoid keeping the door open for long periods in order to conserve energy. Ensure the appliance is away from any sources of heat (direct sunlight, electric oven or cooker etc.)
- Don't set the temperature colder than necessary.

- Don't store warm food or evaporating liquid in the appliance.
- Place the appliance in a well ventilated, humidity free, room. Please refer to "Installing your New Appliance" chapter.
- If the diagram shows the correct combination for the drawers, crisper and shelves, do not adjust the combination as this is designed to be the most energy efficient configuration.

**Hints for fresh food refrigeration**

- Do not place hot food directly into the freezer, the internal temperature will increase resulting in the compressor having to work harder and will consume more energy.
- Do cover or wrap the food, particularly if it has a strong flavor.
- Place food properly so that air can circulate freely around it.

**Hints for freezing**

- When first starting-up or after a period out of use, let the appliance run at least 2 hours on the higher settings before putting food in the compartment.
- Prepare food in small portions to enable it to be rapidly and completely frozen and to make it possible to subsequently thaw only the quantity required.
- Wrap up the food in aluminum foil or cling wraps which are airtight.
- Do not allow fresh, unfrozen food to touch the food which is already frozen to avoid temperature rise of the latter.
- Iced products, (ice cubes, popsicles): if consumed immediately after removal from the freezer compartment, will probably cause frost burns to the skin.
- It is recommended to label and date each frozen package in order to keep track of the storage time.

**Hints for the storage of frozen food**

- Ensure that frozen food has been stored correctly by the food retailer
- Once defrosted, food will deteriorate rapidly and should not be re-frozen. Do not exceed the storage period indicated by the food manufacturer.

**Switching off your appliance**

If the appliance needs to be switched off for an extended period, the following steps should be taken prevent mold on the appliance.

1. Remove all food.
2. Remove the power plug from the main socket.
3. Clean and dry the interior thoroughly.
4. Ensure that all the doors are wedged open slightly to allow air to circulate.

## Troubleshooting

If you experience a problem with your appliance or are concerned that the appliance is not functioning correctly, you can carry out some easy checks before calling for service, please see below.

**Warning!** Don't try to repair the appliance yourself. If the problem persists after you have made the checks mentioned below, contact a qualified electrician, authorized service engineer or the shop where you purchased the product.

**Warning!** A child entrapment warning statement is included in either the operating instructions or in a use and care manual provided with each freezer.

**DANGER:** Risk of child entrapment. Before you throw away your old freezer:

- Take off the doors.
- Leave the shelves in place so that children may not easily climb inside.

Problem	Possible Cause & Solution
Appliance is not working correctly	Check whether the power cord is plugged into the power outlet properly.
	Check the fuse or circuit of your power supply, replace if necessary.
	The ambient temperature is too low. Try setting the chamber temperature to a colder level to solve this problem.
	It is normal that the freezer is not operating during the defrost cycle, or for a short time after the appliance is switched on to protect the compressor.
Odours from the compartments	The interior may need to be cleaned
	Some food, containers or wrapping cause odours.
Noise from the appliance	The sounds below are quite normal: <ul style="list-style-type: none"> <li>•Compressor running noises.</li> <li>•Air movement noise from the small fan motor in the freezer compartment or other compartments.</li> <li>•Gurgling sound similar to water boiling.</li> <li>•Popping noise during automatic defrosting.</li> <li>•Clicking noise before the compressor starts.</li> <li>• Clicking noise when you get the water.</li> <li>•The motor running noises when you get ice.</li> </ul>
	Other unusual noises are due to the reasons below and may need you to check and take action: The cabinet is not level. The back of appliance is touching the wall. Bottles or containers have fallen or are rolling.
The motor runs	It is normal to frequently hear the sound of the motor, it will



continuously	<p>need to run more when in following circumstances:</p> <ul style="list-style-type: none"> <li>•Temperature setting is set colder than necessary</li> <li>•Large quantity of warm food has recently been stored within the appliance.</li> <li>•The temperature outside the appliance is high.</li> <li>•Doors are kept open too long or too often.</li> <li>•After installing the appliance or it has been switched off for a long time.</li> </ul>
A layer of frost occurs in the compartment	Check that the air outlets are not blocked by food and ensure food is placed within the appliance to allow sufficient ventilation. Ensure that door is fully closed. To remove the frost, please refer to the “Cleaning and Care” chapter.
Temperature inside is too warm	You may have left the doors open too long or too frequently; or the doors are kept open by some obstacle; or the appliance is located with insufficient clearance at the sides, back and top
Doors can't be closed easily	Check whether the top of the refrigerator is tilted back by about 10mm to allow the doors to self-close, or if something inside is preventing the doors from closing.
The light is not working	<ul style="list-style-type: none"> <li>•The LED light may be damaged. Refer to replace LED lights in “Cleaning and Care” chapter.</li> <li>•The control system has disabled the lights due to the door being kept open too long. Close and reopen the door to reactivate the lights.</li> </ul>
Freezer door is so hard to open	<ul style="list-style-type: none"> <li>•Warm air inside the freezer compartment is rapidly cooled. Since cold air takes up less space than warm air, negative pressure results.</li> <li>•Typically, within a few minutes the pressures of the door will equalize and the door can be opened with little effort.</li> </ul>

## Disposal of the Appliance

It is prohibited to dispose of this appliance as household waste.

### Packaging materials


Packaging materials with the recycle symbol are recyclable. Dispose of the packaging into a suitable waste collection container to recycle it.

### Before disposal of the appliance

1. Pull out the main plug from the main socket.
2. Cut off the power cord and discard with the main plug



**Warning!** Refrigerators contain refrigerant and gases in the insulation. Refrigerant and gases must be disposed of professionally as they may cause eye injuries or ignition. Ensure that tubing of the refrigerant circuit is not damaged prior to proper disposal.

<b>Correct Disposal of this product</b>	
	<p>This symbol on the product or in its packing indicates that this product may not be treated as household waste. Instead, it should be taken to the appropriate waste collection point for the recycling of electrical and electronic equipment. By ensuring this product is disposed of correctly, you will help prevent potential negative consequences for the environment and human health, which could otherwise be caused by the inappropriate waste handling of this product. For more detailed information about the recycling of this product, please contact your local council, your household waste disposal service, or the shop where you purchased the product.</p>