

Mora

18.0
CU.FT.

**FULL SIZE TOP FREEZER
REFRIGERATOR**

Model MRT180N6AWD White



- Choose to install to open the door from right side or left side for your convenience
- Convenient adjustable shelves to store taller items
- Bright LED lighting makes it easy to find what you are looking for
- Easy to use control panel makes controlling the temperature easier than ever before
- Gallon door storage allows you quick access to items that you use most frequently
- Two humidity-controlled drawers keep produce fresh.



Gallon Door Storage



**Two Humidity Controlled Crisper
Drawers**



LED Lighting



Electronic Temperature Control

Flexible & space-saving performance

This Mora MRT180N6AWD fits small, but stores a lot. The reversible door design allows placement of this refrigerator virtually anywhere you need. With adjustable shelves and gallon door bins, you have more flexibility to organize your storage space and store taller items or bulkier items at ease. Two humidity controlled crisper drawers keep produce fresher, longer. LED lighting brightens the interior, helping you find what you're looking for. Also, easy to use control panel allows you to control the temperature with just one click.

All product, product specifications, and data are subject to change without notice to improve reliability, function, design or otherwise. ©2023HlsenseUSA. All rights reserved

Mora

18.0

CU.FT.

FULL SIZE TOP FREEZER REFRIGERATOR

Model MRT180N6AWD White

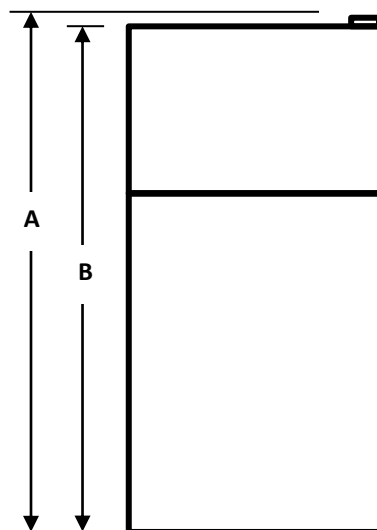
TECHNICAL SPECIFICATIONS

Performance	
Total Capacity (Ft ³)	18.0
Refrigerator/ Freezer Capacity(Ft ³)	14.0 / 4.0
Counter-Depth	No
Energy Efficiency Class	DOE
Evaporator	Single
Noise Level (dB(A))	43
General Features	
Control Type	Electronic
Energy saver	No
Door Alarm	No
Number of Doors	2
Reversible Doors	Yes
Door Design	Flat
Handle	Recessed
Door Material	White (Painted Metal)
Refrigerant	R600a
Refrigeration Compartment	
Temperature Range	36 °F to 46 °F
Air Flow	Multi-Air Flow
Shelf	2 Full Width Glass
Door Bins	2 Full Width Gallon Bins and 1 Half Width Bin
Storage Drawer	2 Humidity Controlled Crispers
Lighting	LED Top
Freezer Compartment	
Temperature Range	-11 °F to 5 °F
Shelf	1 Full width Glass
Door Bin	2 Full width Bins
Ice Maker Ready	N/A
Lighting	N/A
Product	
Leveling Legs	Yes
Carton Dimensions (WxDxH)(in.)	30.6 X 32.8 X 69.8
Net Weight/Gross Weight (lbs.)	165/192
UPC Code	810088363757

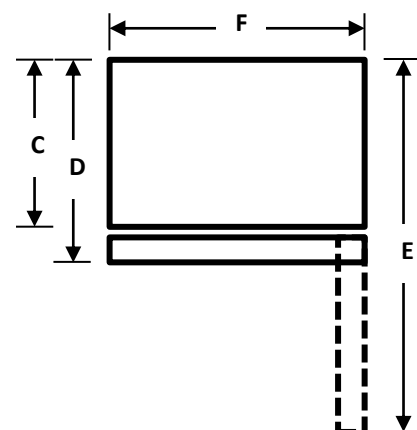
INSTALLATION DIMENSION

Overall Dimension	Height to top of hinge(in.) A	66.5
	Height to top of case(in.) B	65.9
	Case depth without door(in.) C	27.6
	Case depth with door(in.) D	30.7
	Depth with fresh door open 90 degree (in.) E	58.1
	Width(in.) F	29.7
Air Clearance	Each side(in.)	3.9
	Top(in.)	3.9
	Back(in.)	3.0

FRONT VIEW



TOP VIEW



All product, product specifications, and data are subject to change without notice to improve reliability, function, design or otherwise.
©2020 Hisense USA. All rights reserved

Hisense USACorporation
7310 McGinnis Ferry Road, Suwanee, GA. 30024
1-877-465-3566
www.hisense-usa.com